

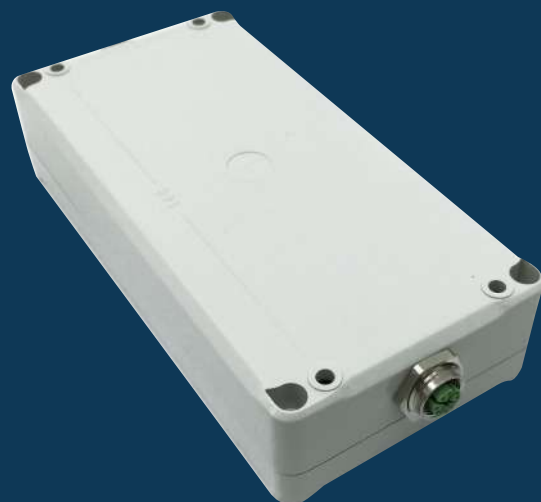


ACCESS SCANNER

Product Sheet

IP65-rated, this Bluetooth and NFC reader is built for placement inside door frames or wall interiors, or outside in the elements.

For other installation guides or products sheet, see documents.sensorberg.com



PRODUCT DETAILS

Power supply	PoE+ (12v power adapter available upon request)
Supply voltage	up to 48 V DC (commonly 12V DC, managed by PoE+ switch)
Power consumption	2-3W (idle) 11W (maximum)
Temperature	-20°C to +50°C
Plug Connector	M12

Case	2 parts, IP65 Housing
------	-----------------------

CPU	ARM Cortex-A53
Microprocessor	1200 Mhz
Cores	4
Memory Ram	1 GB of LPDDR2-SDRAM
Storage	4 GB eMMC storage
Other	Several extention boards available (upon request)

Supports	BLE, NFC, Magnetic field technology
----------	-------------------------------------

Measures



INSTALLATION TIPS

The Access Scanner next to the door will be powered with POE+ 802.3at and Power over ethernet Cat Cable (min Cat5e)

It should NOT be installed in close proximity to metal surfaces as the metal will cause disturbances in the signal strength and reliability.

The plug connector is a M12 and not a RJ45.

The Access Scanner only reads signals, in order to actually control devices it is necessary to also install an Access Hub.

Ethernet has to be routed in a separate VLAN, exclusive for Sensorberg devices.

A building appliance in the server room connected in the same VLAN increases security of the solution even further.

For further use cases Sensorberg offers multiple extension boards to control lockers, elevators, security sensors or external sensors via zWave with the same hardware. Contact your Sales person if you are interested.



ACCESS SCANNER

Product Sheet

Sensorberg GmbH
c/o Unicorn.Berlin WEM GmbH
Markgrafenstraße 63
10969 Berlin, Deutschland

info@sensorberg.com

+49 30 275 830 21