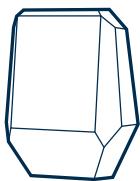


## ACCESS HUB

Instruction manual for Sensorberg's  
Access Hub

Also online in: [documents.sensorberg.com](https://documents.sensorberg.com)  
For more info: [support@sensorberg.com](mailto:support@sensorberg.com)



## ACCESS HUB

Our flagship access control device, used for access control, management and monitoring. Provides access via Bluetooth and LAN, with modular NFC.

INSTALLATION PREREQUISITES

1



Cat 5e (or higher) cable with PoE+

2



PoE+ switch installed in server room with separated VLAN for Sensorberg devices.




Make sure to have the Bridge installed in the Server room (With Ethernet and power cable).

3




Flush Mounted Socket in wall, next to the door. ~125 cm height

4



or



Compatible lock (12V e-opener or potential free opening contact for electric lock)

E-opener

Electrical lock

INSTALLATION MATERIALS

5

 \* x2

Screw included in Flush Mounted Socket

7

 x1

Security screw

6

Access Hub case



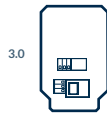
Front



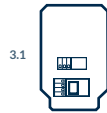
Back

8

Access Hub



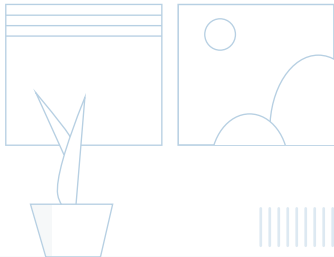
or



for power 24/7

\* Not included in the installation package from Sensorberg, as wall texture and required material varies from project to project.

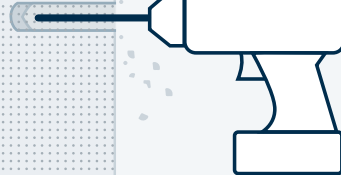
STEP 1  
BEFORE YOU INSTALL



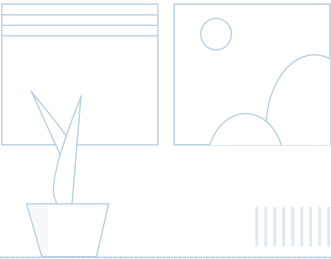
INSIDE



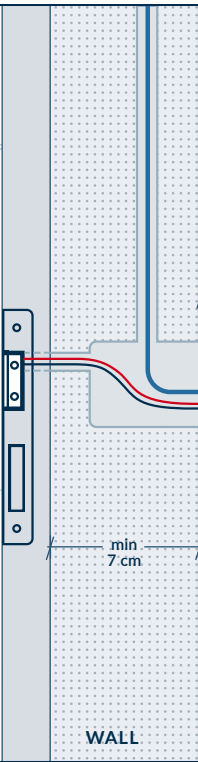
WALL



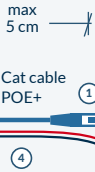
OUTSIDE (INDOOR)



INSIDE

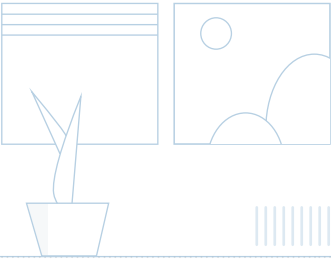


WALL

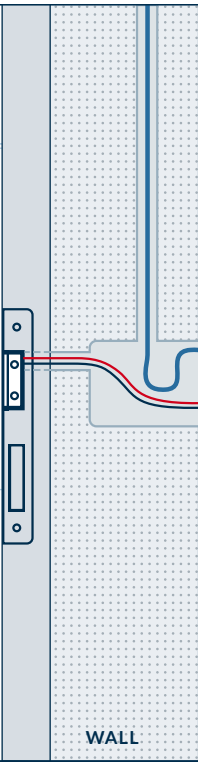


OUTSIDE (INDOOR)

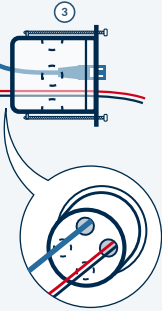
STEP 3  
INSTALLATION GUIDE



INSIDE



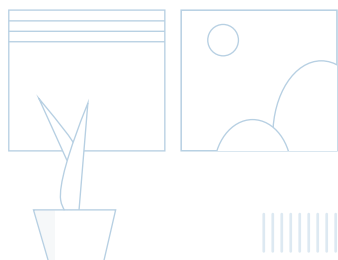
WALL



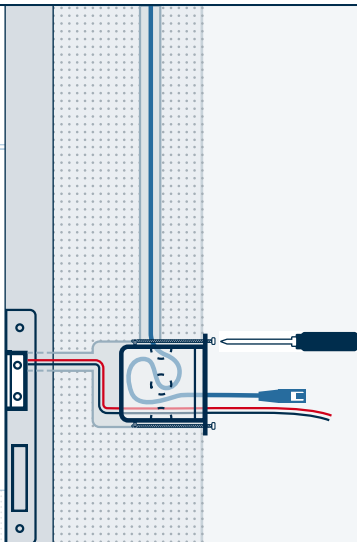
OUTSIDE (INDOOR)

#### STEP 4

7



INSIDE

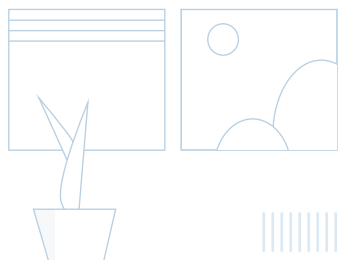


WALL

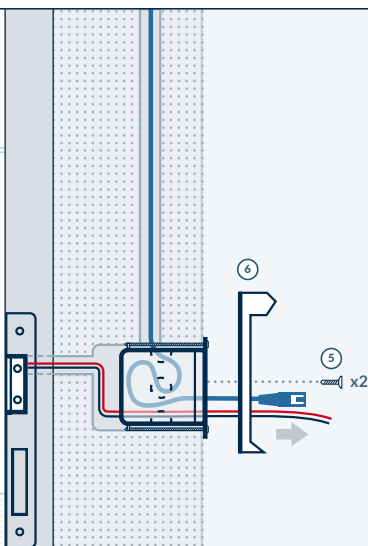
OUTSIDE (INDOOR)

#### STEP 5

8



INSIDE

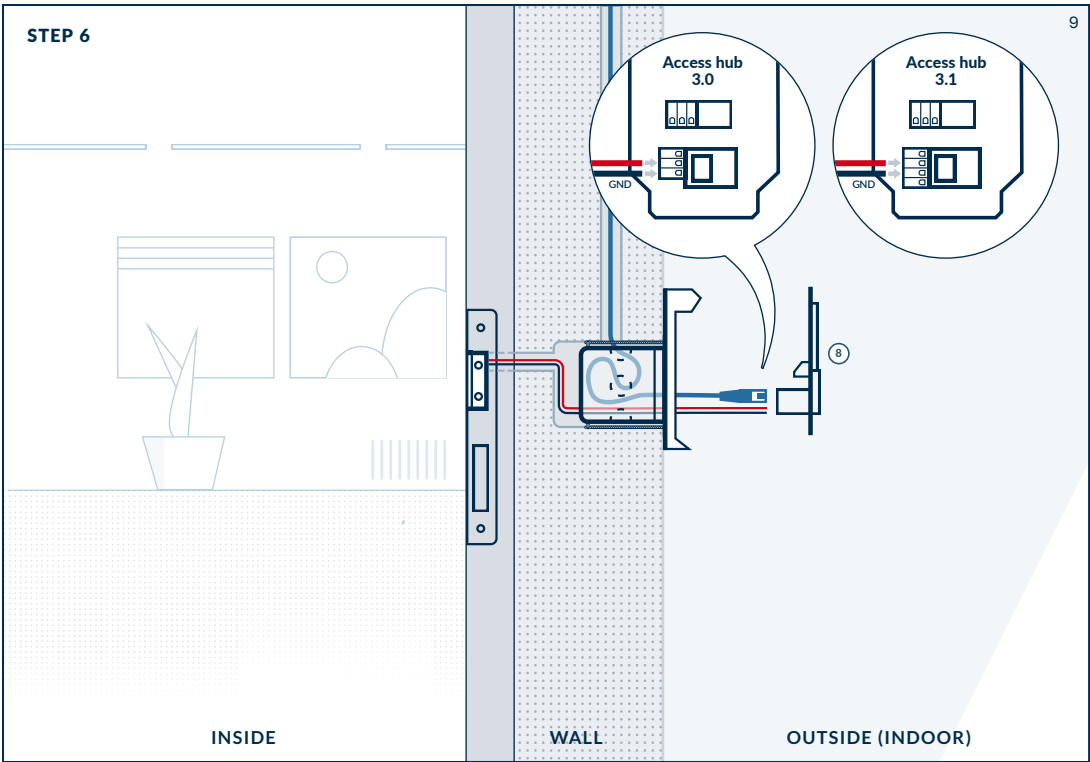


WALL

OUTSIDE (INDOOR)

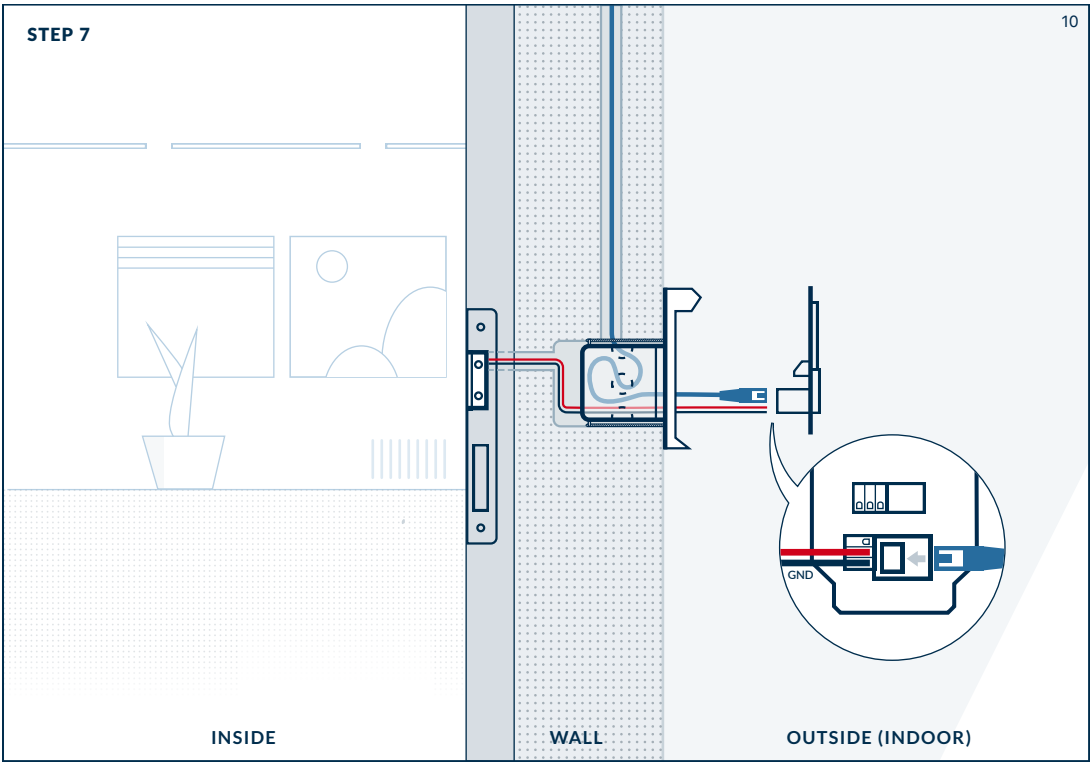
STEP 6

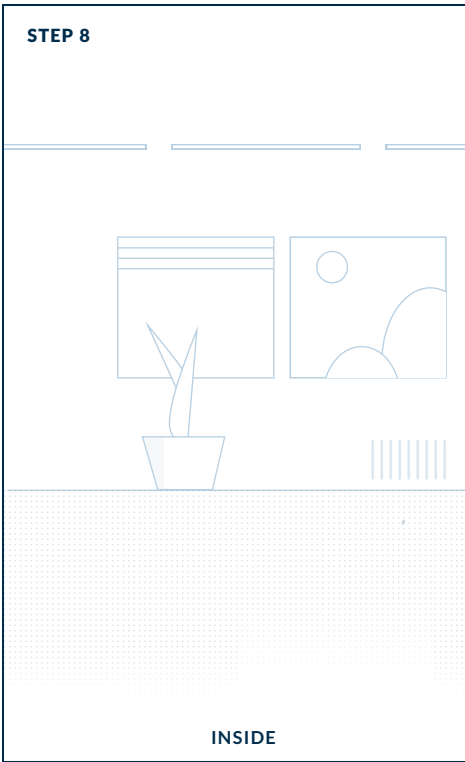
9



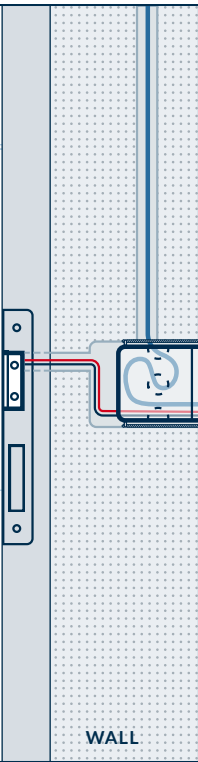
STEP 7

10

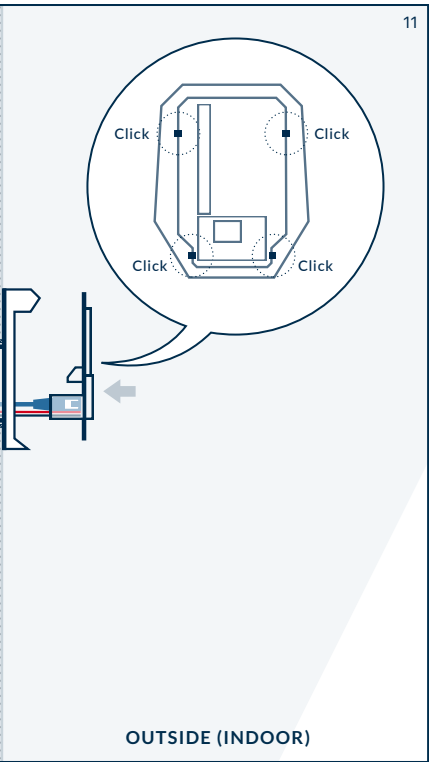




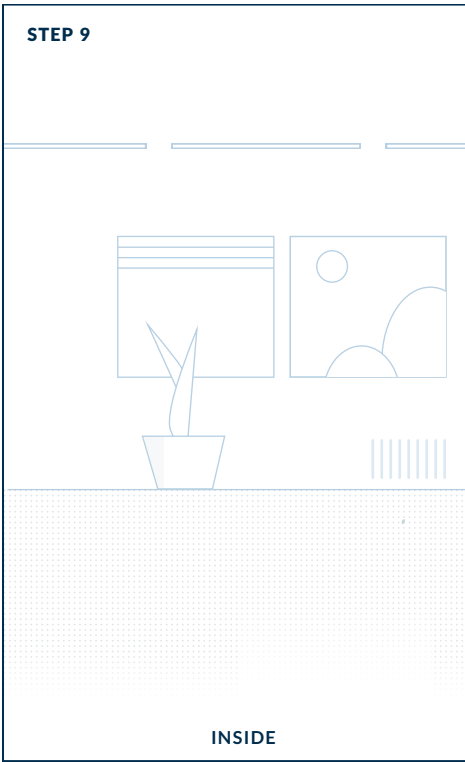
INSIDE



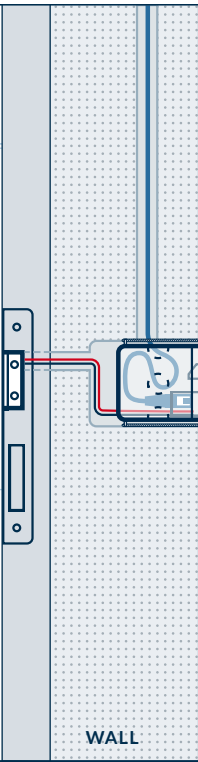
WALL



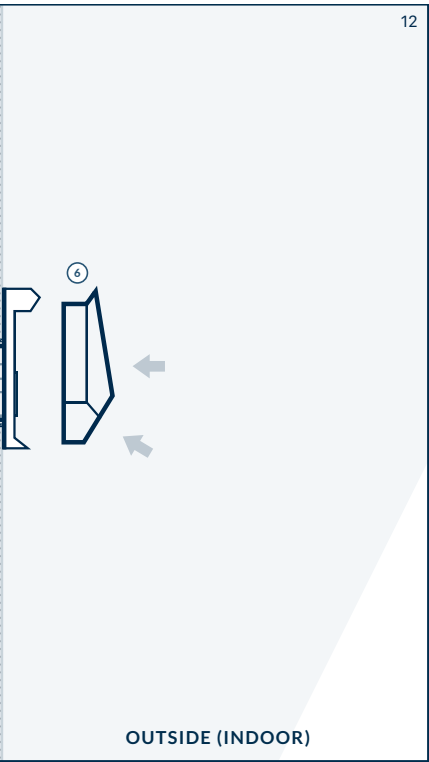
OUTSIDE (INDOOR)



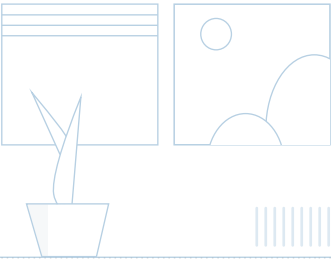
INSIDE



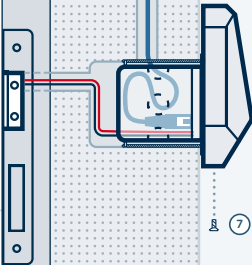
WALL



OUTSIDE (INDOOR)

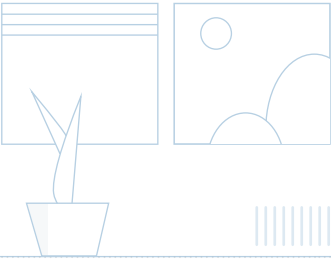


INSIDE

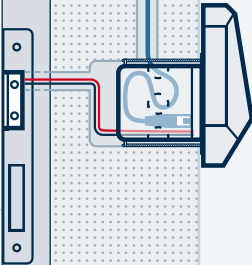


WALL

OUTSIDE (INDOOR)



INSIDE



WALL

OUTSIDE (INDOOR)

