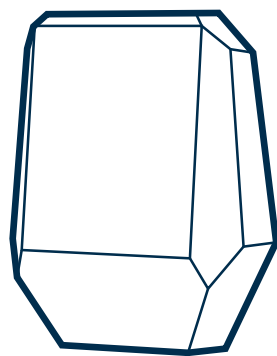


ACCESS HUB

Installationsanleitung für den Sensorberg
Access Hub

Auch online: documents.sensorberg.com
für mehr Informationen: support@sensorberg.com



ACCESS HUB

Unser Flaggschiff für Zutrittskontrolle, Management und Monitoring.
Ermöglicht die Öffnung über Bluetooth und LAN mit modularem NFC.

INSTALLATIONSVORAUS-SETZUNGEN



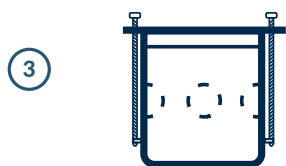
- ① Cat 5e (oder höher) Kabel mit PoE+



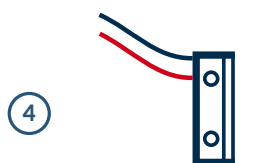
- ② PoE+ switch installiert im Server Raum mit separaten VLAN für Sensorberg Geräte



- ③ Bridge mit Ethernet und Netzteil im Server Raum installiert und angeschlossen.



- ④ Unterputzdose in der Wand neben der Tür. ~ 125 cm Höhe



- ⑤ Elektrischer Türöffner



- ⑥ Elektrisches Schloss

- oder
Kompatibles Schloss (12V elektrischer Türöffner oder potentialfreier Kontakt für elektrisches Schloss)

INSTALLATIONSMATERIALIEN



- ⑤ Befestigungsschrauben



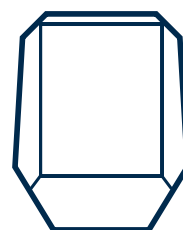
- ⑦ Sicherheitsschraube



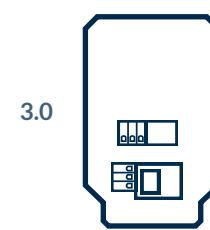
- ⑥ Access Hub Gehäuse



- ⑧ Access Hub

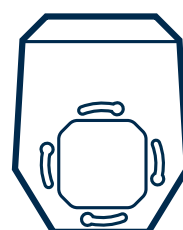


Vorderseite

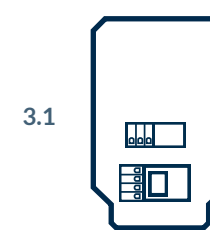


3.0

oder



Rückseite

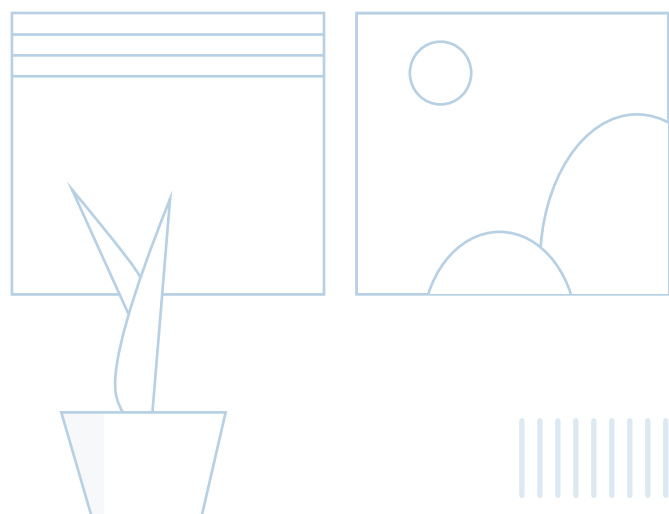


3.1

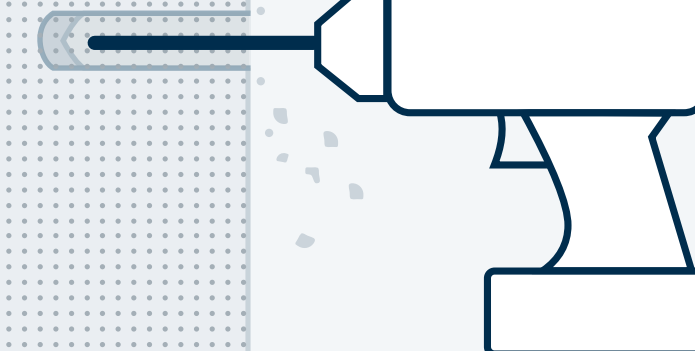
für dauerhafte Stromversorgung

- * Nicht im Installationspaket von Sensorberg enthalten, da Wandbeschaffenheit und benötigtes Material von Projekt zu Projekt unterschiedlich sind.

SCHRITT 1 VOR DER INSTALLATION



INNEN

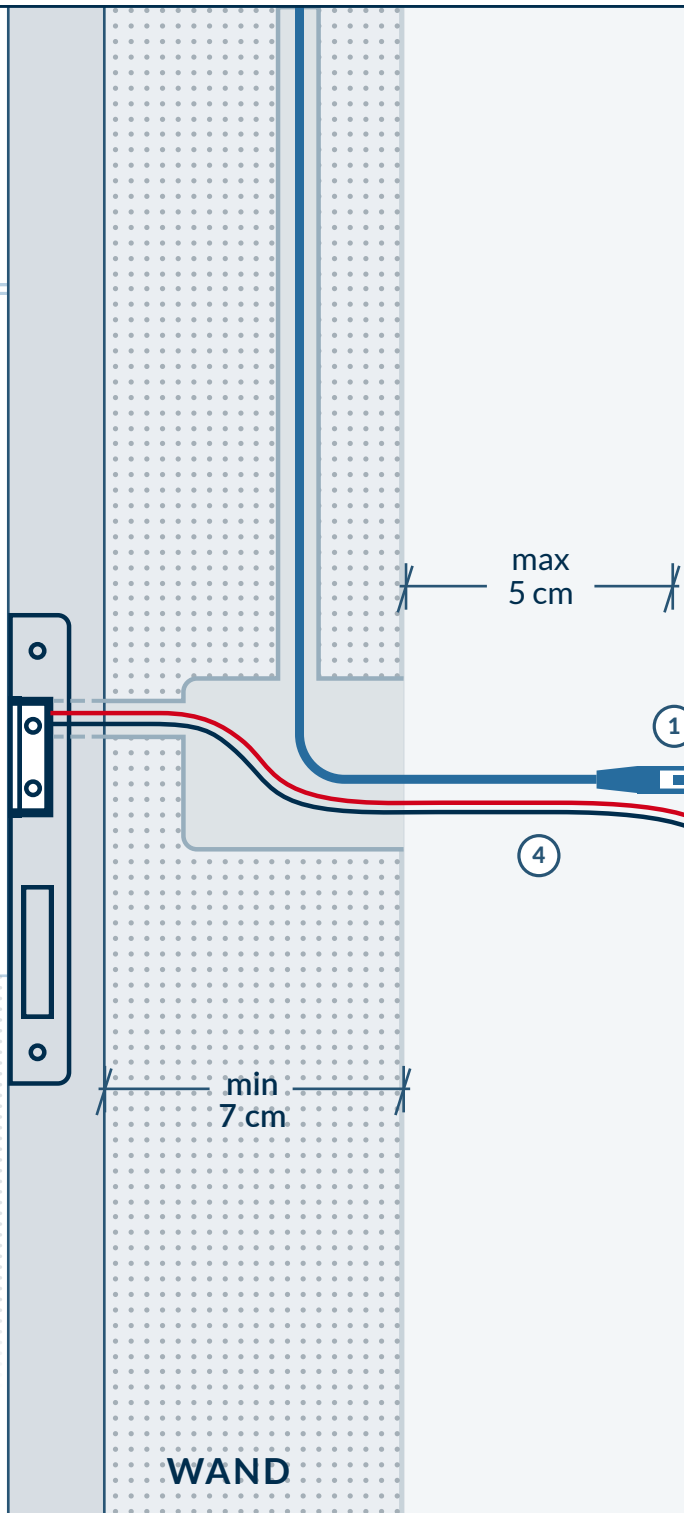


WAND

INNEN

SCHRITT 2

5



① Cat Kabel mit PoE+

④

max
5 cm

min
7 cm

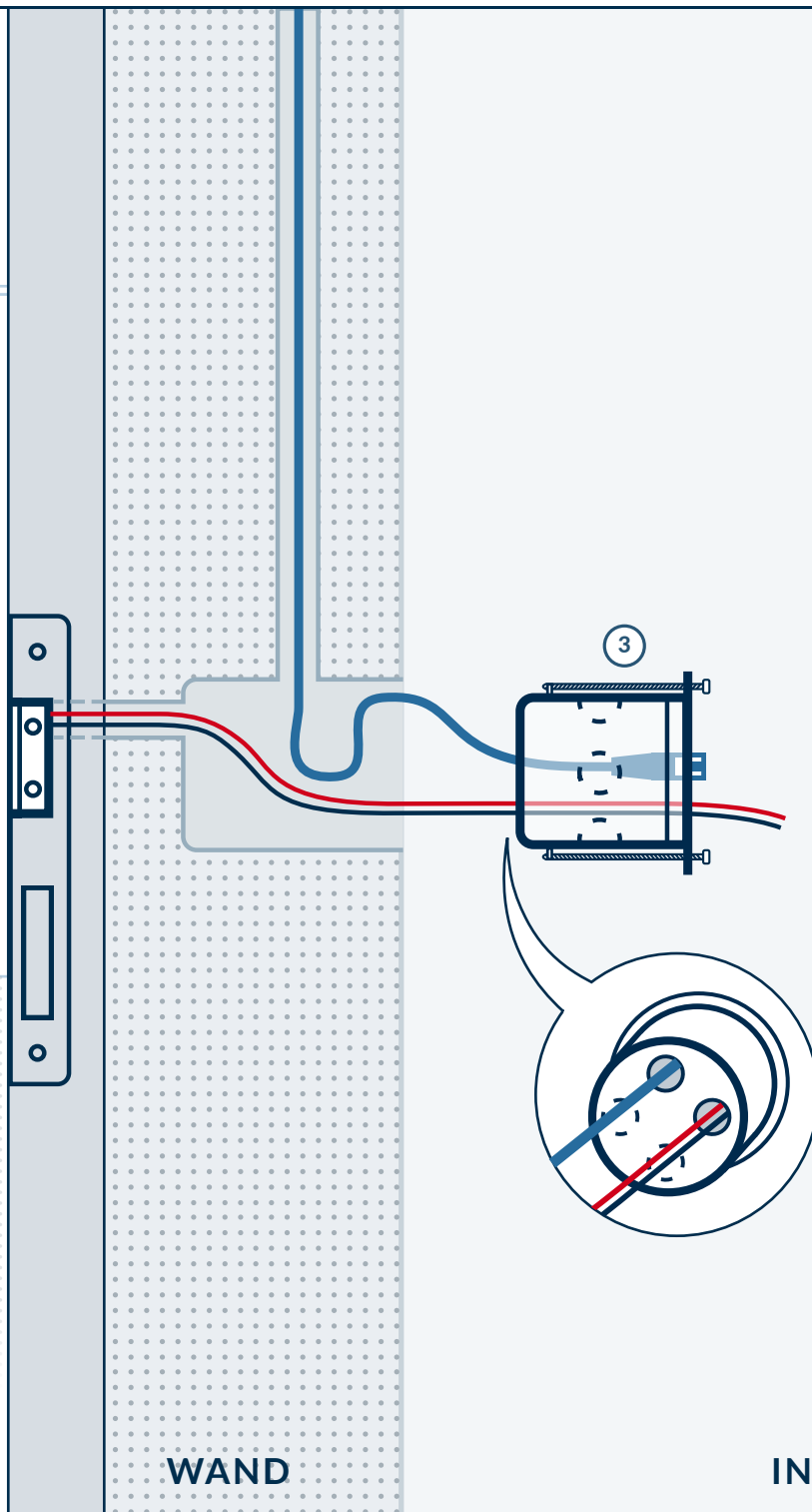
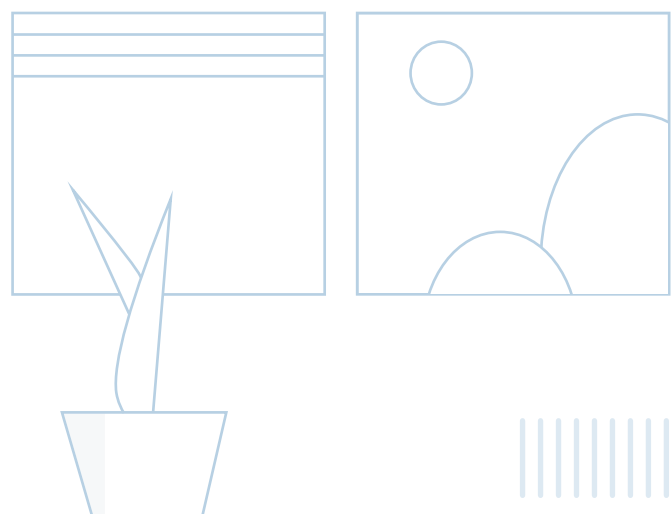
INNEN

WAND

INNEN

SCHRITT 3 INSTALLATIONSANLEITUNG

6



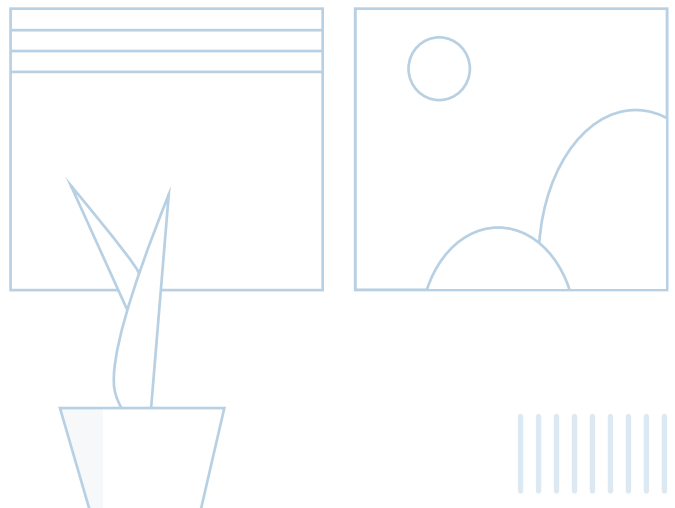
③

INNEN

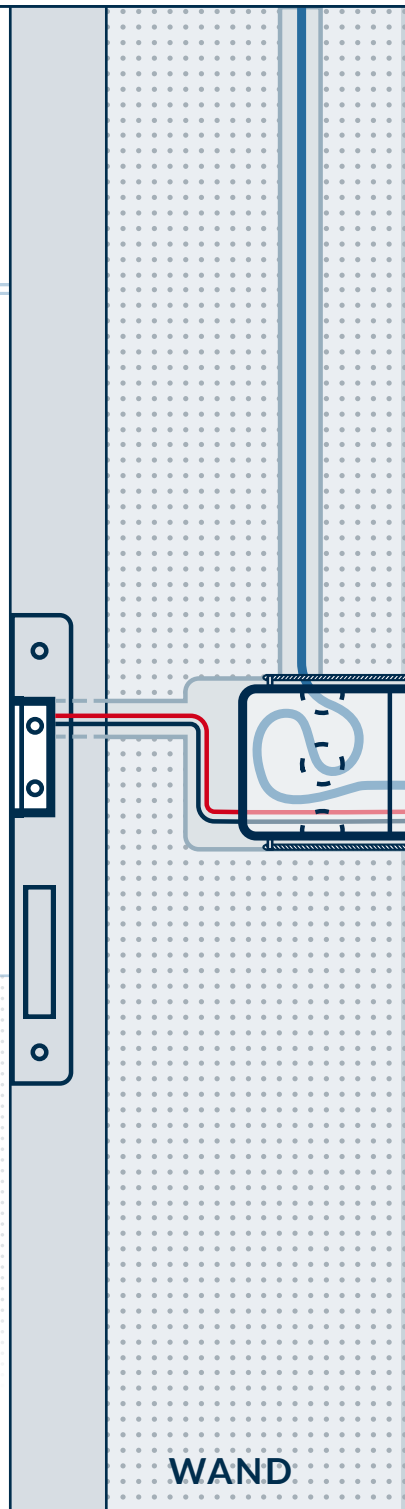
WAND

INNEN

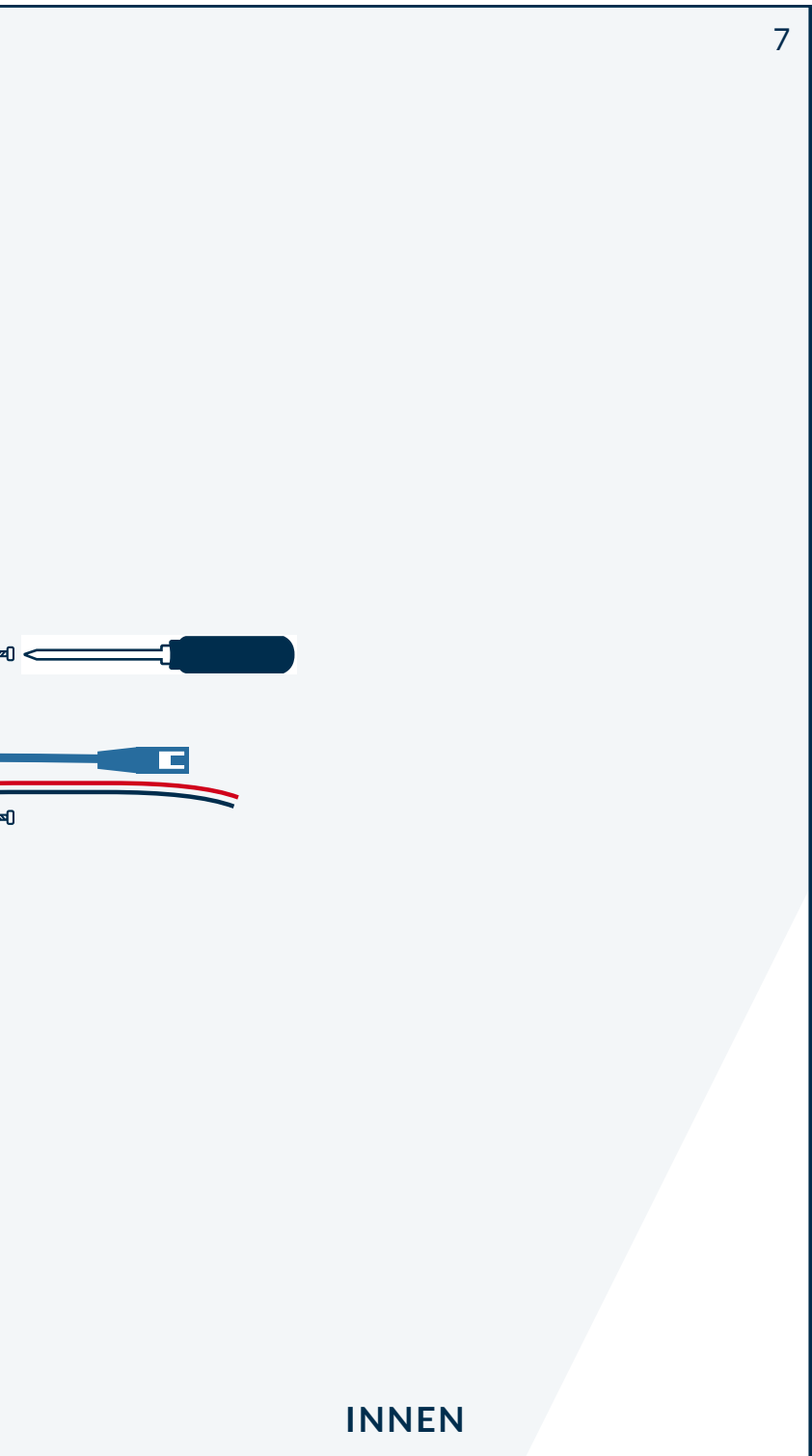
SCHRITT 4



INNEN

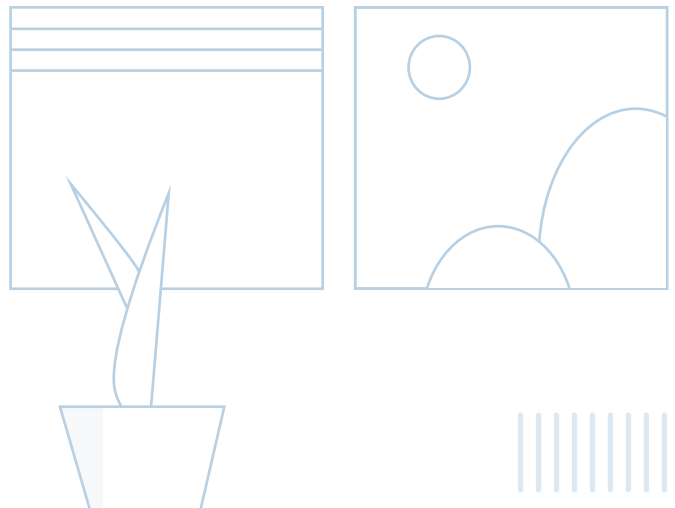


WAND

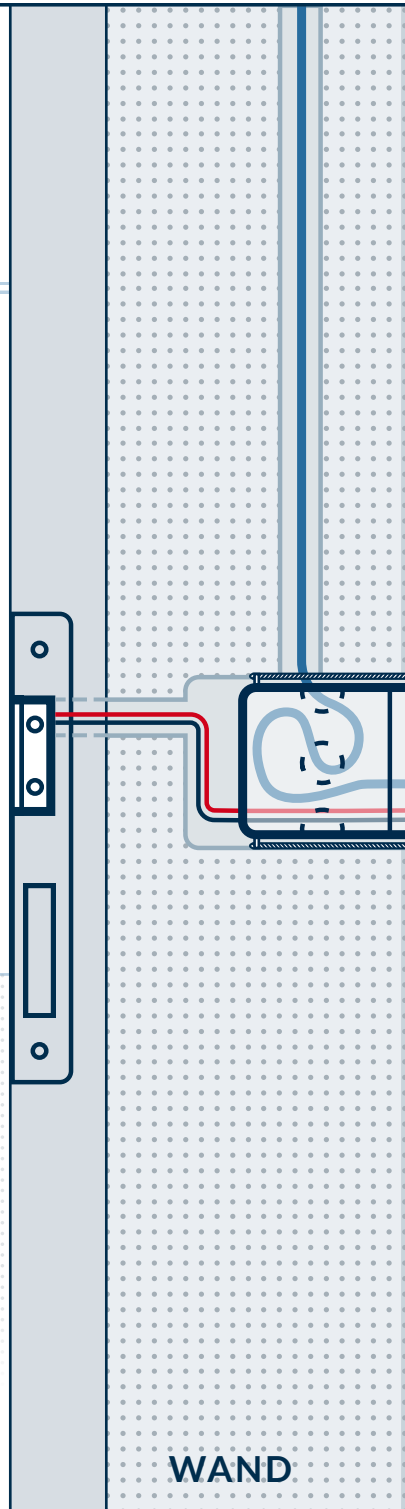


INNEN

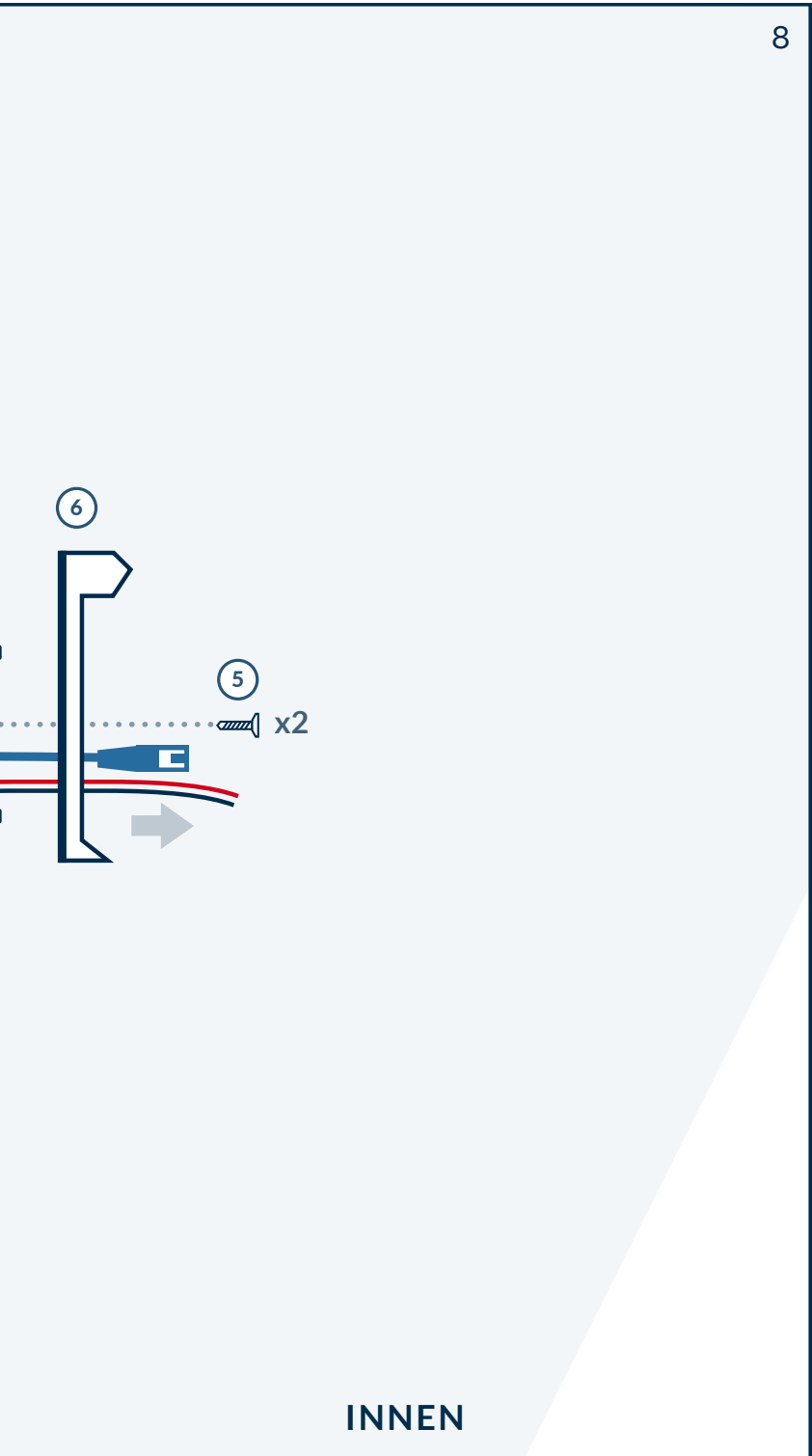
SCHRITT 5



INNEN

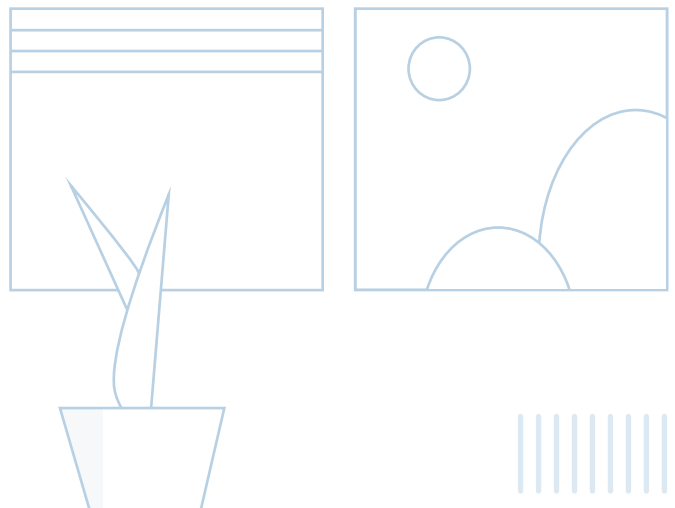


WAND

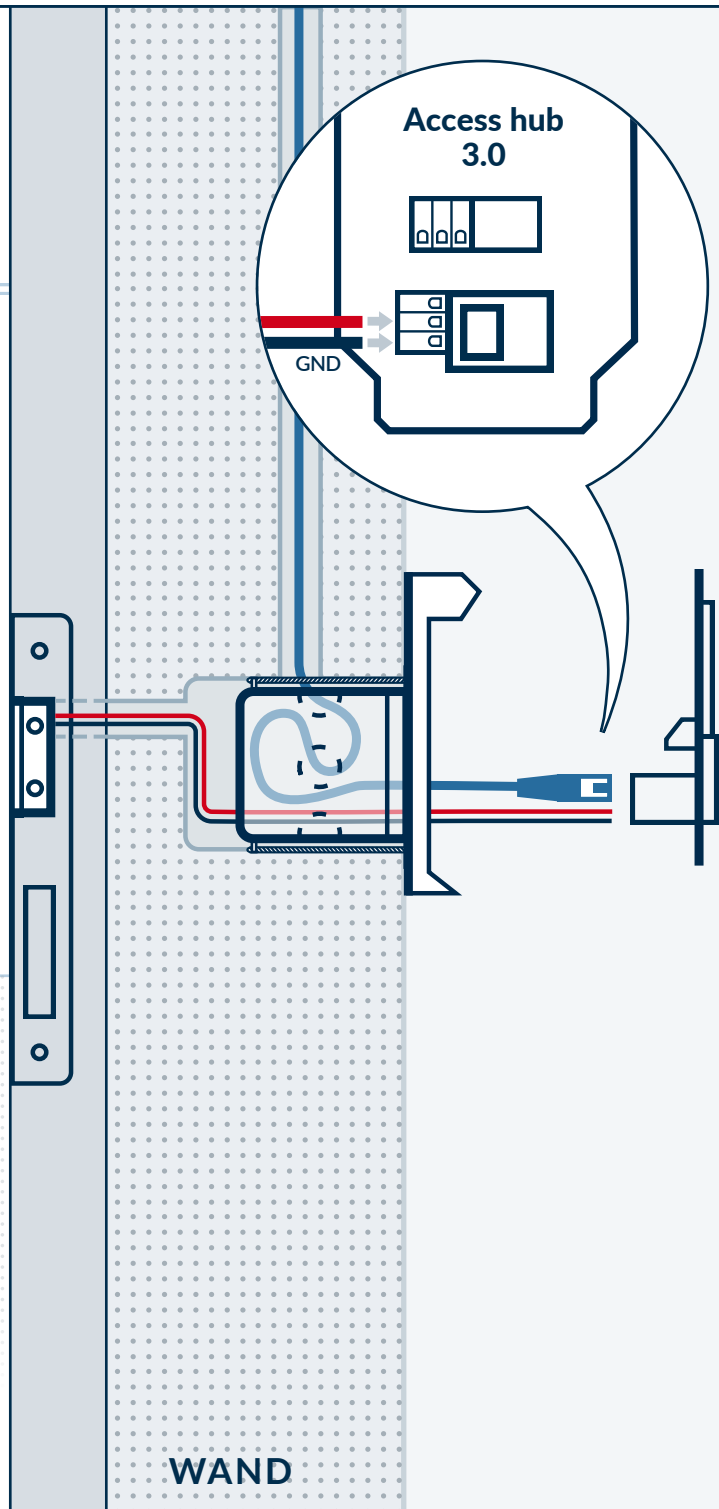


INNEN

SCHRITT 6



INNEN

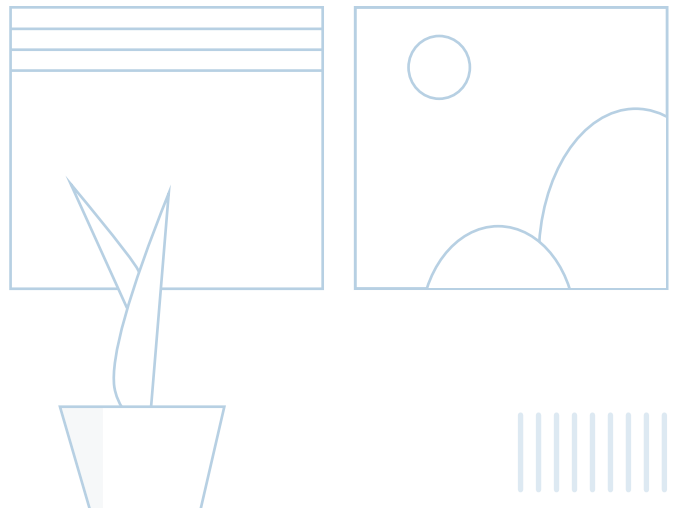


WAND

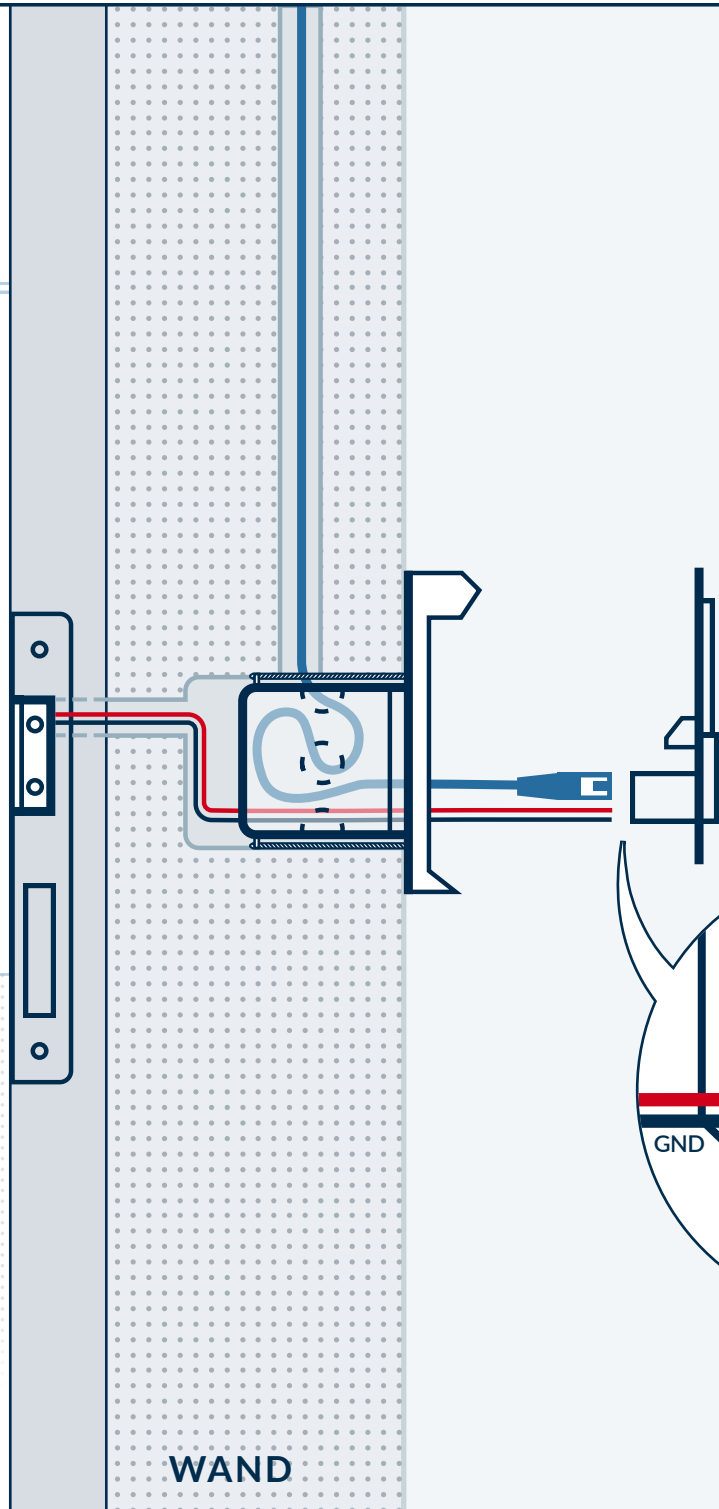
INNEN

8

SCHRITT 7



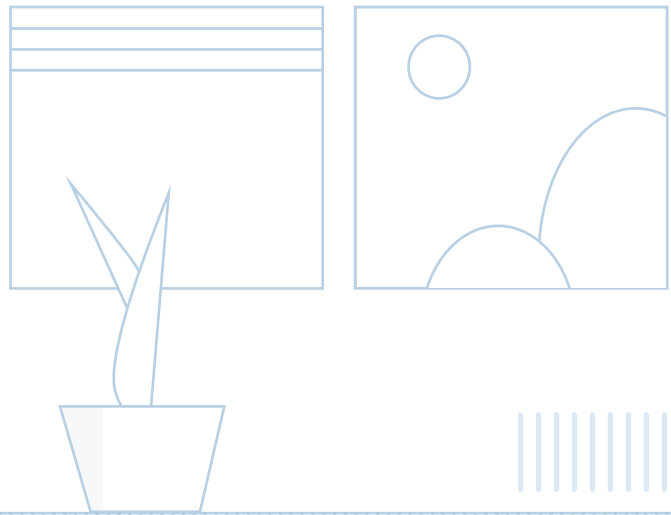
INNEN



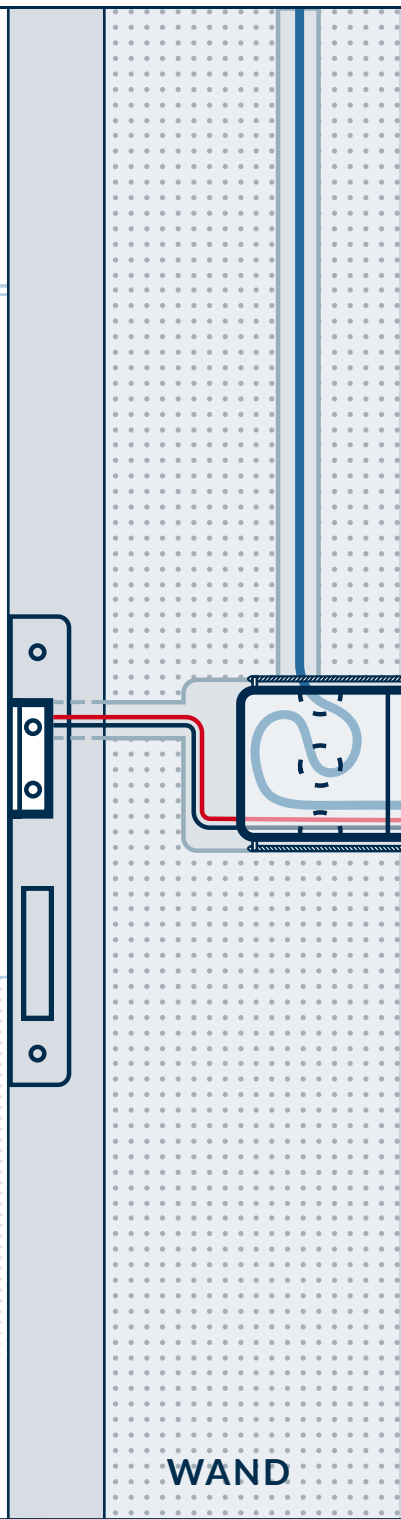
WAND

INNEN

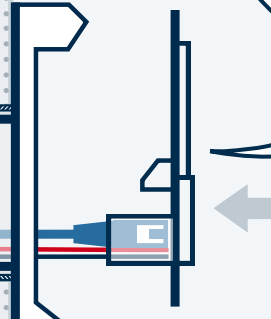
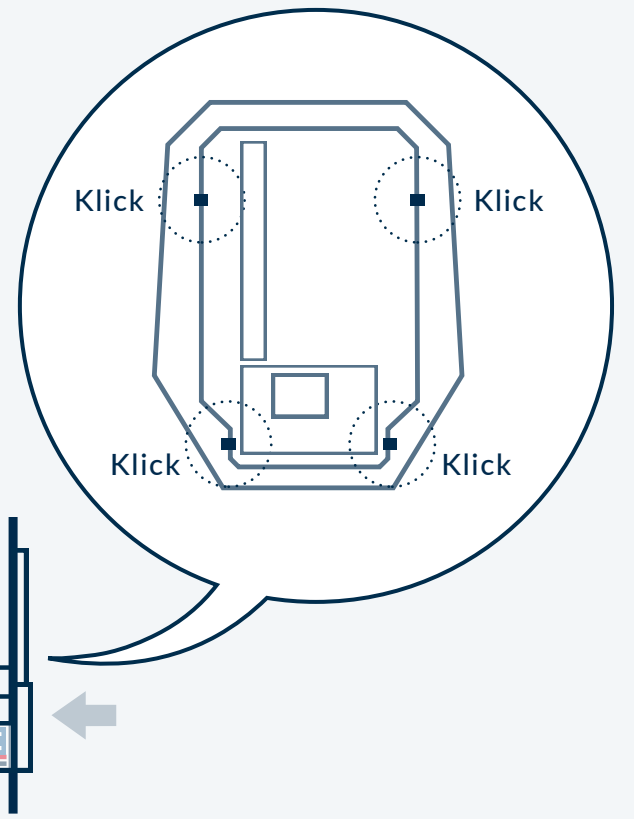
SCHRITT 8



INNEN

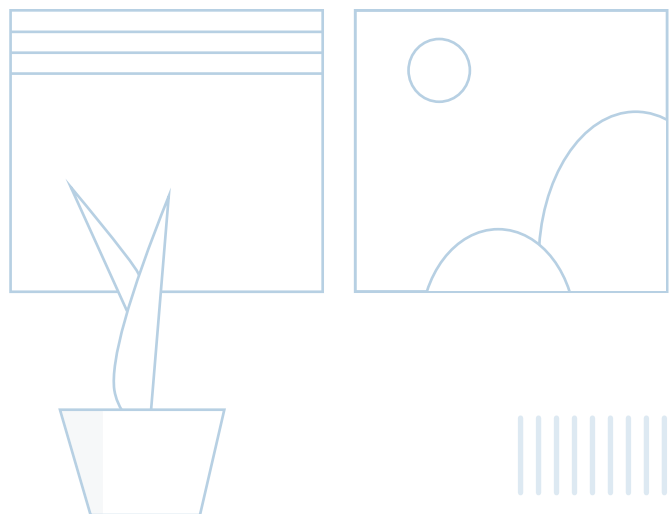


WAND

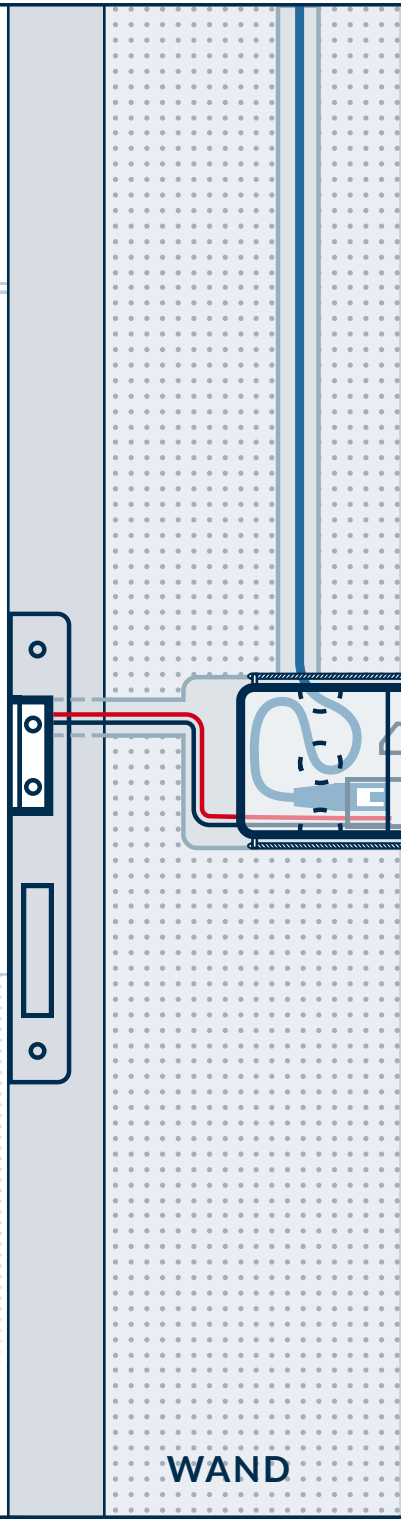


INNEN

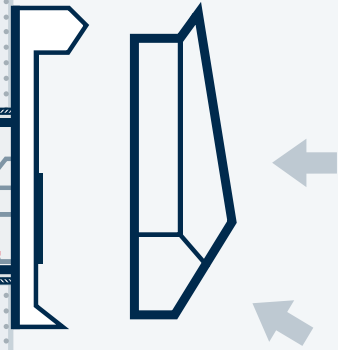
SCHRITT 9



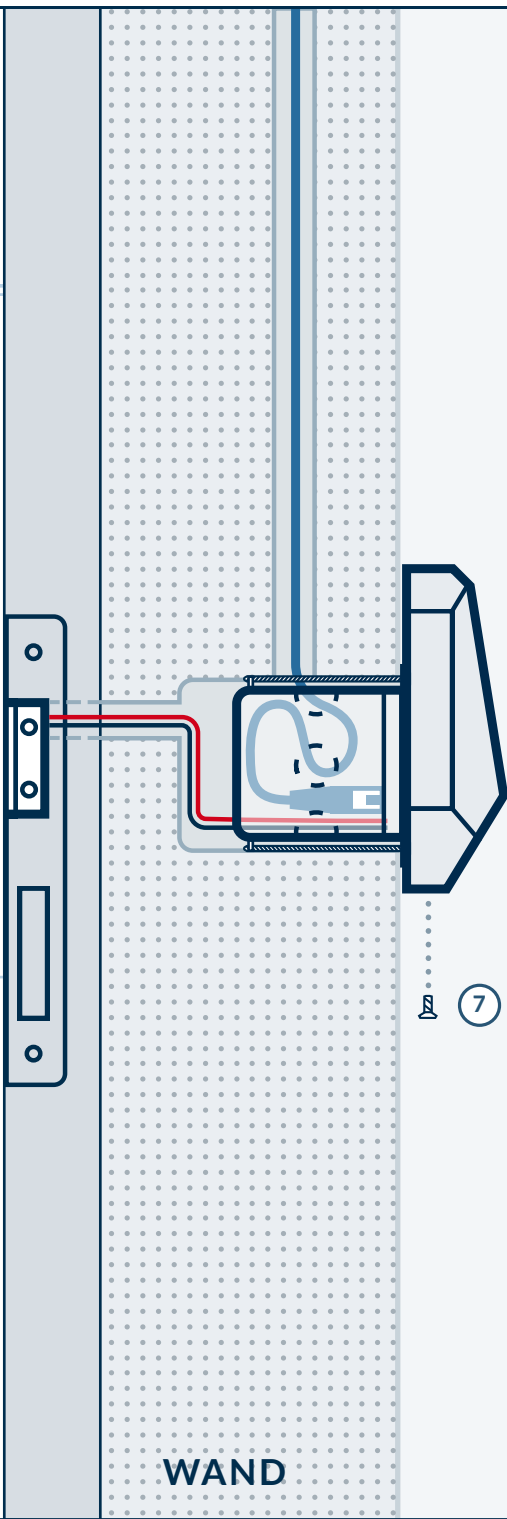
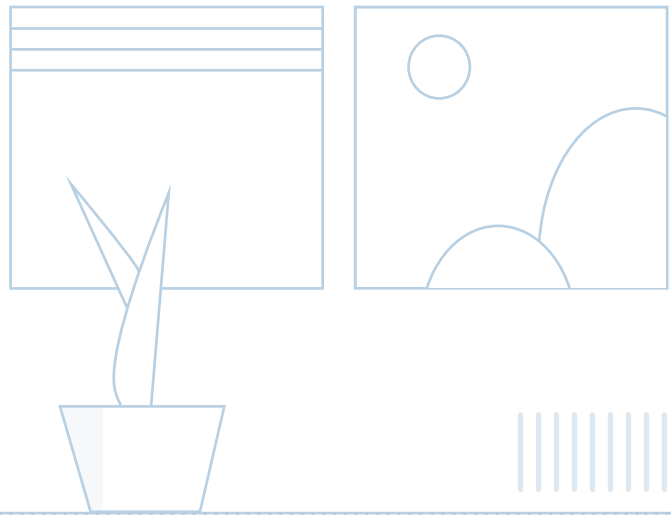
INNEN



WAND



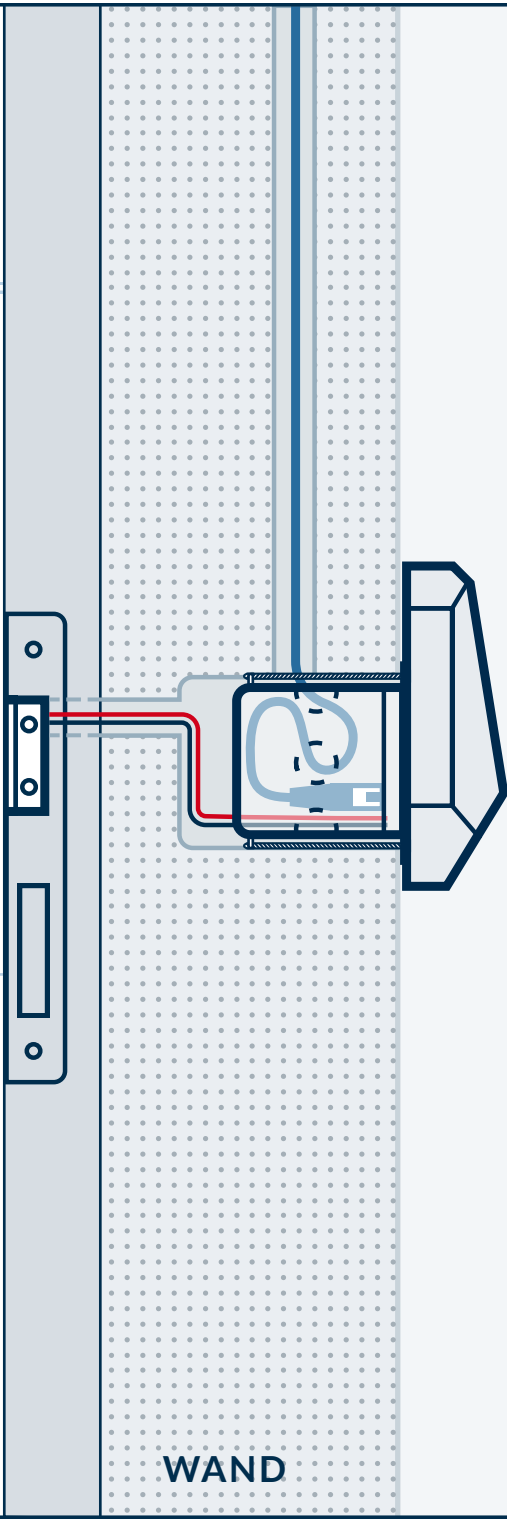
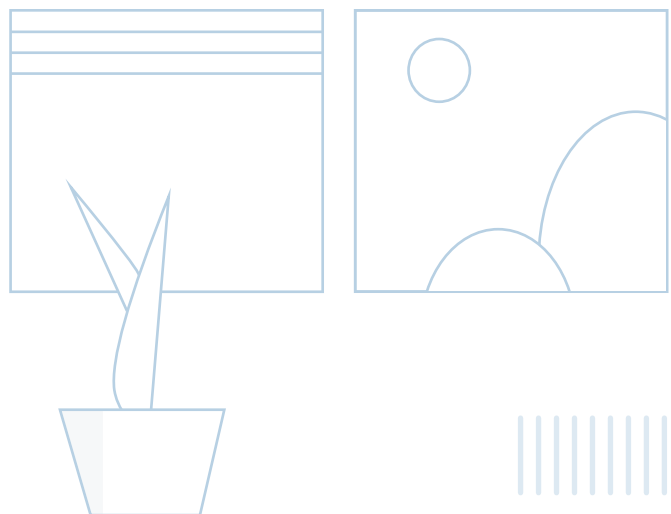
INNEN



INNEN

WAND

INNEN



INNEN

WAND

INNEN

